



COLLEGE IN HIGH SCHOOL

2024-2025 Jefferson County

BlueRidge
COMMUNITY AND
TECHNICAL COLLEGE



ABOUT COLLEGE IN HIGH SCHOOL

Blue Ridge Community and Technical College and Jefferson County Schools have created several options for high school students to begin the college experience while in high school. With discounted college tuition, along with ease of scheduling, high school students have several options to get the “JumpStart.”

THIS VIEWBOOK EXPLORES THE VARIOUS OPTIONS TO GET THE JUMPSTART.

Cybersecurity	Page 4
EDET	Page 5
General Studies	Page 6
Mechatronics and Engineering Technologies	Page 7
Grow Your Own Program	Page 8
MedEd Jefferson County	Page 9
Dual Enrollment Offerings	Page 12
College Credit Courses	Page 13
Why and How to Enroll	Page 14
Frequently Asked Questions	Page 15

MISSION STATEMENT:

Blue Ridge Community and Technical College provides our diverse student population with life-changing education, training, and services that drive economic development within the communities we serve.



www.BlueRidgeCTC.edu
304.260.4380

JumpStart Programs

Jefferson County Dual Enrollment Offerings and College Credit Only Courses

Enrollment

Frequently Asked Questions



Cyber Security

Some of the greatest threats to our National Security are attacks against computers and networks. With Cyber Security, students are prepared to work frontline in a wide range of industries securing the systems. This JumpStart program will include general studies along with entry level Information Security courses.

BRCTC Course	Course Name	Credits	Berkeley County Credit
ENGL 101	English Composition I	3	1/2 Senior English
CAS 111	Information Literacy	3	1/2 Elective
SDE 188	Intro to Programming Logic	3	1/2 Elective
CNET 111	Network Fundamentals	3	1/2 Elective
**MATH 100A	Algebra Essentials	3	1/2 Senior Math
**or MATH 154	Finite Mathematics		
Total Fall Credits:		15	

BRCTC Course	Course Name	Credits	Berkeley County Credit
ENGL 110	Technical Writing	3	1/2 Senior English
IT 185	Intro to Linux	3	1/2 Elective
CYBR 101	Intro to Cyber Security	3	1/2 Elective
IT 105	Computer Ethics	3	1/2 Elective
MATH 105	College Algebra	3	1/2 Senior Math
Total Spring Credits:		15	

Based on AY 24 \$25/HS credit hour, the estimated tuition and course fees for Cybersecurity: \$1,265 (reflects tuition and Fee estimate for full year). Books are purchased separately. The College bookstore offers several options including New, Used, Rent, and E-Books. *Tuition and curriculum subject to change.** Fall math course selected based on ACT, SAT, or Placement score.*



Electric Distribution Engineering Technology

This JumpStart program is designed to be an introductory program of the Lineworker program. Lineworkers are the first line responders who work to keep “the lights on.” Electrical Distribution Engineering is a highly sought after career path providing lifelong opportunity.

BRCTC Course	Course Name	Credits	Berkeley County Credit
ENGL 101	English Composition I	3	1/2 Senior English
EDET 150	Fundamentals of Electricity	4	1/2 Elective
MECH 101/101L	Intro to Mechatronics and Lab	3	1/2 Elective
**MATH 100	Math Essentials	3	1/2 Senior Math
**or MATH 154	Finite Mathematics		
Total Fall Credits:		13	

BRCTC Course	Course Name	Credits	Berkeley County Credit
ENGL 110	Technical Writing	3	1/2 Senior English
EDET 180	Building Better Relationships	3	1/2 Elective
EDET 181	Conflict Resolution	2	1/2 Elective
MECH 120	Fluid Power	3	1/2 Elective
MATH 101	Introduction to Mathematics	3	1/2 Senior Math
Total Spring Credits:		14	

Based on AY 24 \$25/HS credit hour*, the estimated tuition and course fees for Electric Distribution: \$1,200 (reflects tuition and Fee estimate for full year). Books are purchased separately. The College bookstore offers several options including New, Used, Rent, and E-Books. *Tuition and curriculum subject to change.** Fall math course selected based on ACT, SAT, or Placement score.



General Studies

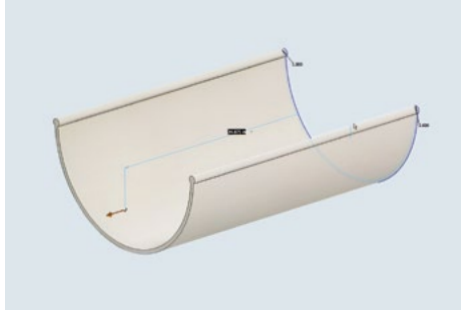
The General Studies program offers students the foundation for a wide variety of majors at Blue Ridge CTC allowing students to direct their studies toward a career and program of study of their choosing. Courses in composition, algebra, lab science, and social studies provide a basis for ongoing academic study.

BRCTC Course	Course Name	Credits	Jefferson County Credit
ENGL 101	English Composition I	3	1/2 Senior English
MATH 105	College Algebra	3	1/2 Senior Math
HIST 101	World History to 1500	3	1/2 Senior History
BIOL 101	General Biology	4	1/2 Senior Science
Total Fall Credits:		13	

BRCTC Course	Course Name	Credits	Jefferson County Credit
ENGL 102	English Composition II	3	1/2 Senior English
MATH 114	Probability and Statistics	3	1/2 Senior Math
HIST 102	World History since 1500	3	1/2 Senior History
BIOL 102	General Biology II	4	1/2 Senior Science
Total Spring Credits:		13	

Based on AY 24 \$25/HS credit hour, the estimated tuition and course fees for General Studies: \$1057.48 (reflects tuition and Fee estimate for full year). Books are purchased separately. The College bookstore offers several options including New, Used, Rent, and E-Books.*

**Tuition and curriculum subject to change. ** Student must have appropriate ACT/SAT/Placement score for Math and English.*



Mechatronics and Engineering Technologies

Engineering Technology, Heavy Equipment, Mechatronics, or Plastics Engineering Technology

The Mechatronics and Engineering Technology track is designed to prepare students for a challenging and exciting career as a high-tech problem solver. This program is a blend of classroom and active, hands-on courses. Completers of the Mechatronics and Engineering Technology pathway will be prepared to pursue their Associate of Applied Science degree in Engineering Technology, Heavy Equipment Technician, Mechatronics, or Plastics Engineering Technology. ***Tuition and fees for this program are covered by a WORC 5 grant.**

BRCTC Course	Course Name	Credits	Berkeley County Credit
ENGL 101	English Composition I	3	1/2 Senior English
MECH 106 & 106L	Electricity and Electronics & Lab	4	1/2 Elective
MECH 101	Introduction to Mechatronics	3	1/2 Elective
**MATH 100A	Algebra Essentials	3	1/2 Senior Math
**or MATH 154	Finite Mathematics		

Total Fall Credits: 13

BRCTC Course	Course Name	Credits	Berkeley County Credit
ENGL 110	Technical Writing	3	1/2 Senior English
MATH 105	College Algebra	3	1/2 Senior Math
MECH 110	Mechanical Systems	3	1/2 Elective
MECH 121	Safety Awareness & OSHA	2	1/2 Elective
MECH 120	Fluid Power	3	1/2 Elective

Total Spring Credits: 14

Based on AY 24 \$25/HS credit hour, the estimated tuition and course fees for Advanced Manufacturing: \$1,265. Books are purchased separately. The College bookstore offers several options including New, Used, Rent, and E-Books. *Tuition and curriculum subject to change.*

*** Fall math course selected based on ACT, SAT, or Placement score.*



Grow Your Own Program

Grow Your Own is a jump start for students interested in entering a career in education. The program was created by the West Virginia Department of Education to help support future teachers. Jefferson County Schools has stepped forward as one of the counties piloting the initiative and has partnered with Blue Ridge CTC.

The Grow Your Own pathway will be offered to all Juniors. Courses will be offered with Blue Ridge CTC at NO-COST to the student.

*****The Grow Your Own Program does NOT pay for books*****

Fall Junior Year Courses

EDUC 150 Seminar in Education
COMM 202 Fundamentals of Speech ^o

Spring Junior Year Courses

HIST 101 World History ^{IP}
COMM 205 Professional Communications ^o

Fall Senior Year Courses

ENGL 101 English Composition I ^{IP}
MATH 105 Algebra ^o
BIOL 101 General Biology I ^o
EDUC 200 Foundations of Education ^{IP}

Spring Senior Year Courses

ENGL 102 Writing Composition II ^{IP}
MATH 114 Probability and Statistics ^o
BIOL 102 General Biology II ^o
EDUC 260 Survey of Exceptional Child ^{IP}

^o Offered Online

^{IP} Offered In-Person



Jefferson County MedEd

Through a partnership between Blue Ridge Community and Technical College (BRCTC) and Jefferson County Schools (JCS), students have a unique opportunity to begin training for a career in healthcare during their Junior and Senior year in high school.

The MedEd program provides two pathways for students: Medical Lab Assistant or Clinical Medical Assisting. During Junior year, all students take foundation coursework to prepare to select a pathway during Senior year.

The MedEd program is provided at no cost to students. BRCTC coordinates and delivers all curriculum and instruction. Courses meet daily within Jefferson County High Schools.

Junior Year Courses

CAHS 110	Healthcare Foundations I 6.5 Credit Hours
CAHS 120	Healthcare Foundations II 6 Credit Hours

Select a Path for Senior Year:

Senior Year Option 1

Medical Lab Assistant

MLAS 210	Medical Lab Assistant I 6 Hours
MLAS 220	Medical Lab Assistant II 5.5 Hours

Senior Year Option 2

Clinical Medical Assistant

CMAS 210	Clinical Medical Assisting I 6 Hours
CMAS 220	Clinical Medical Assisting II 5.5 Hours

Jefferson County MedEd

CAHS 110: Healthcare Foundations

1 - 6.5 Credits

Course Description: This course is designed to provide foundational knowledge and skills for students interested in entering the medical field. Topics covered include Anatomy & Physiology, Medical Terminology, and how to interact with patients across different healthcare settings. Students will learn how to room a patient, obtain vital signs, perform intakes, and prepare patients for medical encounters.

CAHS 120: Healthcare Foundations

2 - 6 Credits

This course builds on the knowledge developed in Healthcare Foundations 1. Topics covered including pharmaceutical math and clinical theory related to the provision of safe, quality care. Students will have an opportunity to demonstrate these skills in laboratory and clinical environments.

MLAS 210: Medical Lab Assistant

1 - 6 Credits

Reinforcing and building on the knowledge and skills developed in the Healthcare Foundations courses, students will deepen their understanding of lab technology. Topics will focus on phlebotomy and point of care testing which will be practiced in a laboratory and clinical setting.

MLAS 220: Medical Lab Assistant

2 - 5.5 Credits

Reinforcing and building on the knowledge and skills developed in the Medical Lab Assistant 1 course, students will deepen their understanding of clinical theory as they prepare to transition to the workforce. Topics will focus on career development, diversity in the workplace, and certification exam prep. Students will reinforce skills learned throughout this program in a clinical setting.

Course Descriptions

CMAS 210: Clinical Medical Assisting

1 - 5 Credits

Reinforcing and building on the knowledge and skills developed in the Healthcare Foundations courses, students will deepen their understanding of clinical theory. Topics will focus on medication administration, injections and medical assistant procedures which will be learned and practiced in a laboratory and clinical setting.

CMAS 220: Clinical Medical Assisting 2 - 6.5 Credits

Reinforcing and building on the knowledge and skills developed in the Clinical Medical Assisting 1 course, students will deepen their understanding of clinical theory. Topics will focus on Medical Assistant procedures, office assisted procedures and Phlebotomy which will be learned in laboratory and clinical settings.

How To Register:

To participate in the MedEd program, speak with your school counselor. Registration with BRCTC occurs during the first week of classes.

Jefferson County Dual Enrollment Offerings

\$25 PER CREDIT HOUR

ALL COURSES REPRESENT 1/2 HIGH SCHOOL CREDIT.

Students must meet with school counselor to determine whether courses will count as required or elective credits.

ART

ART 103 Intro. To Visual Art*

BUSINESS AND MARKETING

BUSN 101 Introduction to Business
ECON 123 Contemporary Economics*

ENGLISH

ENGL 101 Written English*
ENGL 102 Written English II*
COMM 202 Fundamentals of Speech*
COMM 205 Professional Communications*

LANGUAGES

FREN 101 French I
FREN 102 French II
GERM 101 German I
JAPN 101 Japanese I
SPAN 101 Spanish I
SPAN 102 Spanish II

MATHEMATICS

MATH 101 Intro. to Mathematics*
MATH 105 Algebra*
MATH 106 Trigonometry*
MATH 108 Pre-Calculus*
MATH 114 Elementary Probability & Stats.*
MATH 154 Finite Mathematics*

POLITICAL SCIENCE

PSCI 100 Politics and Government*
PSCI 101 American Federal Government*

SCIENCE

BIOL 101/L General Bio. Science I*
BIOL 102/L General Bio. Science II*
CHEM 127 General, Organic & Biol. Chem.. I*
CHEM 128 General, Organic & Biol. Chem. II*

SOCIAL STUDIES

ECON 205 Principles of Macroeconomics*
ECON 206 Principals of Microeconomics*
GEOG 105 World Cultural Geography*
HIST 101 World History to 1500*
HIST 102 World History Since 1500*
PSYC 203 Intro. to Psychology*
SOCI 203 General Sociology*

HIGH SCHOOL ELECTIVES

IT 102 IT Fundamentals
IT 180 A+ Core 1
IT 181 A+ Core 2
CNET 121 Network+
CYBR 101 Introduction to Cybersecurity
CYBR 160 Security Fundamentals

**Course is part of the WV Core Coursework Transfer Agreement Program. Subject to annual update. Some courses have additional laboratory & technology fees. These courses include, but are not limited to: Allied Health Science, Information Technology, CyberSecurity, Media Studies, etc. Courses taken online are assessed an additional \$25 per credit hour. Courses may have prerequisite coursework or ACT/SAT/Placement Test Scores. Prerequisites must be met in order to register.*

College Credit Only Courses

\$25 PER CREDIT HOUR

ART 115	Drawing I	HIST 210	WV & Appalachian History*
ASL 101	Sign Language I	IT 105	Computer Ethics
ASL 102	Sign Language II	IT 185	Introduction to Linux
BIOL 120/121	Human Anatomy & Physiol. I*	LANG 132	Japanese II
BIOL 122/123	Human Anatomy & Physiol. II*	LGST 100	Intro. to Law & Legal Studies
BUSN 205	Business Ethics	LTEC 101	Laboratory Technician I
BUSN 231	Marketing	LTEC 102	Laboratory Technician II
CAHS 140	Intro. To Healthcare	LTEC 111	Laboratory Technician III
CAHS 141	Intro. To Pharmacology	LTEC 112	Laboratory Technician IV
CGEN 100	First Year Experience	MAST 102	Medical Terminology
CJST 200	Intro. To Criminal Justice System	MATH 100	Math Essentials
EDET 180	Building Better Relationships	MATH 100A	Algebra Essentials
EDET 181	Conflict Resolution	MATH 102	Technical Mathematics
EDET 201	Fundamentals of Electricity I	MATH 207	Calculus I*
EDET 202	Fundamentals of Electricity II	MDIA 101	Intro. To Media Studies
EDUC 150	Seminar in Education	MDIA 102	Intro. to Adobe Photoshop
EDUC 200	Foundations of Education	MDIA 121	Intro. to Digital Photography
ENGL 110	Tech. Writing & Comm.*	MECH 101/L	Intro. to Mechatronics/Lab
ENGL 150	Play Production*	MUSIC 111	Intro. to Music*
ENGL 204	Survey of American Literature*	PHYS 103	General Physical Science I*
ENGL 208	Survey of World Literature*	PHYS 104	General Physical Science II*
GSPE 210	Fitness for Life	PSCI 102	State & Local Govt. Course*
HIST 201	United States History to 1877*	SDE 188	Security Fundamentals
HIST 202	United States History from 1877*	SOCI 215	Human Relations*

**Course is part of the WV Core Coursework Transfer Agreement Program. Subject to annual update. Some courses have additional laboratory & technology fees. These courses include, but are not limited to: Allied Health Science, Information Technology, CyberSecurity, Media Studies, etc. Courses taken online are assessed an additional \$25 per credit hour. Courses may have prerequisite coursework or ACT/SAT/Placement Test Scores. Prerequisites must be met in order to register.*

Why Enroll?

Save Time

These programs allow students to take advantage of earning both college and high school credit. In addition, transportation is available for the JumpStart program. With classes that transfer, enter college with credits that will reduce time earning your degree.

Save Money \$\$

Enrolling in a College in High School program saves considerable time and money. At the current rate of \$25 per credit hour*, students save \$156/per credit hour**.

Sample	HS Rate	BRCTC Rate	Local 4 Year University
3 credit hour course	\$75	\$543	\$1013
<i>Sample course is tuition only; excludes lab fees and book costs</i>			

Enrolling into a JumpStart program can save students nearly \$4,400 (tuition costs only).

*\$25.00 HS rate per credit hour is set by the WVCTCS annually and may be subject to increase.

**\$181/credit hour is the AY 23-24 Blue Ridge CTC per credit hour rate. May be subject to increase subsequent academic semesters.

How to Enroll:

1. Discuss scheduling options with High School Counselor.
2. Meet with a Blue Ridge CTC High School Enrollment Specialist:
Call: 304.260.4380 ext.2113
Text: 304.398.6718
Email: highschool@blueridgectc.edu
3. Students who would like to register for the College in the High School courses can complete the High School Non-Degree Seeking registration form and submit it online, in person, or via email, fax or regular mail to Blue Ridge CTC.
4. Attend High School Program Orientation and complete any required course placement testing. Class sizes are limited and may require an interview process.
5. Start Classes!

Apply Today!



Frequently Asked Questions

Does the College report attendance?

Student attendance is collected and reported to Jefferson County Schools daily. Students are expected to regularly attend courses. Student attendance issues are reported to respective high schools for early intervention.

Are there scholarships available?

Financial assistance in the form of scholarships are available for JumpStart programming. An application is required and students must prove financial need. To apply for a scholarship, please contact Blue Ridge CTC's High School Enrollment Specialist:

Call: 304.260.4380 ext. 2113

Text: 304.398.6718

Email: highschool@blueridgectc.edu

What happens if I am unsuccessful in my courses?

Blue Ridge CTC provides a variety of student services to promote success within the JumpStart Programs. Students who begin falling behind are referred for tutoring assistance. If all other means have been exhausted, high school counselors work with individual students to find alternative senior scheduling solutions.

When are bills due?

Bills are due the week before courses begin each semester. Students may pay bills through BRIDGE, pay in person on campus, or pay over the phone by calling the finance office at 304.260.4380 ext. 2218.

How do I buy books?

Students can find book lists by visiting the Blue Ridge CTC Bookstore website through Follett. Books are listed by course name and section and all course materials are displayed. Students purchasing books must ensure textbook ISBN numbers match the listing on the Follett website.

What is a prerequisite?

A prerequisite is an academic requirement that must be satisfied before or during enrollment in a desired class. Prerequisites might include other courses, a minimum GPA, or upper-division standing.

Why do I have to take a prerequisite course in JumpStart?

The JumpStart programs are designed to be as inclusive as possible. Prerequisite courses are included in the programs to ensure all students have a solid foundation and are not excluded due to a lack of required test scores. Exceptions to prerequisite courses may be made on a case-by-case basis.

Will 100 level courses count toward my degree?

At Blue Ridge, English 100 and Math 100 are offered for college credit. Students can use these three credit hours as electives toward a degree at BRCTC. Students who plan to transfer must check with the receiving institution to determine if and how these courses may transfer to another school.

How/will my classes transfer from Blue Ridge CTC to another school?

JumpStart programs are designed so that students complete approximately the first year of a Blue Ridge CTC associate degree. Students who intend to transfer to another institution must be aware of the specific program requirements at the receiving institution. Students should contact the receiving institution to ask about transferability of coursework. The College also has a number of transfer agreements already in place and available for review on the Blue Ridge website.

What is the WV CORE Transfer Agreement?

The WV CORE Transfer Agreement ensures that students who transfer from an in-state, public college or university to another in-state, public college or university receives credit for specified general studies courses at the receiving institution. Many of the JumpStart courses are included in this agreement.

To read the full agreement and see a list of the CORE courses specified, please visit: www.BlueRidgeCTC.edu.

Who do I contact to see if/how my classes transfer?

Students who plan to transfer should contact the receiving institution to confirm how classes and credits will transfer to another school.

How does changing my degree program affect my credits?

Every program, regardless of school, has curriculum specific to each different major. This curriculum provides an exact list of courses required for that degree. Each program is unique. Students who change degree programs after completing courses may find they have taken courses that do not apply to the new path.

What is an articulation agreement?

Articulation agreements, also called transfer agreements, are agreements between two schools that outline what courses students may transfer with an associate degree. Blue Ridge CTC has a number of agreements in place to ensure students can easily transition after graduation.

Where can I see current articulation agreements that are already in place?

A full list of transfer agreements is available on the Blue Ridge CTC website. The College actively adds new agreements, so students should check back often.

www.blueridgectc.edu/current-students/transfer

[illegible]

This image shows a full page of white paper with horizontal blue or grey ruling lines. The lines are evenly spaced and run across the width of the page, providing a template for handwriting practice. There are no margins, text, or other markings on the page.



Main Campus

13650 Apple Harvest Drive
Martinsburg, WV 25403

Technology Center

5550 Winchester Ave
Martinsburg, WV 25405

Morgan County Center

109 War Memorial Drive
Berkeley Springs, WV 25411

www.BlueRidgeCTC.edu | 304.260.4380

Virtual Campus Tour: www.BlueRidgeCTC.edu/tour

Blue Ridge CTC is committed to fostering a diverse and inclusive culture by promoting diversity, inclusion, equality, and intercultural and intercommunity outreach. Accordingly, the College does not discriminate on the basis of race, color, national origin, ancestry, age, physical or mental disability, marital or family status, pregnancy, veteran status, service in the uniformed services (as defined in state and federal law), religion, creed, sex, sexual orientation, genetic information, gender identity, or gender expression in the administration of any of its educational programs, activities, or with respect to admission or employment. This advertisement is for informational purposes only. Printed and/or electronic documents produced by the College do not constitute a contract, expressed or implied, between an applicant or student. For important information about the educational debt, earnings, and completion rates of students enrolled in Certificate Programs at Blue Ridge CTC, visit: www.blueridgectc.edu/GEInfo (Book Update: 12.2023)