

Configuring the Windows 7 Wireless Client

Before you begin:

The instructions assume a standard Windows 7 installation. If you have customized your settings, your computer may look different.

IT Services is available 8:00-4:00 Monday through Friday if you have additional support needs.

Configuration Steps:

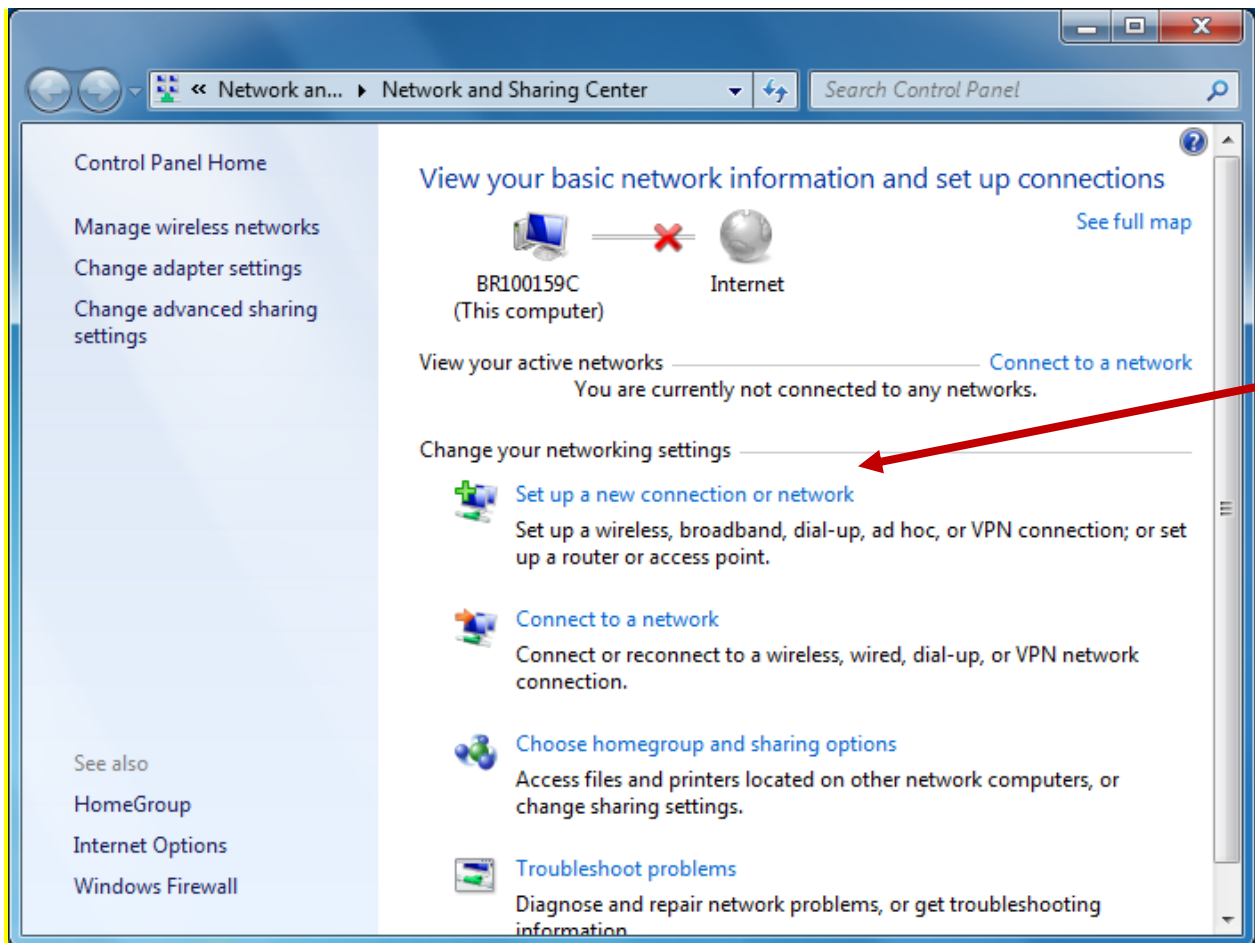
1. In the task bar bottom right of the screen. Click on the bars.



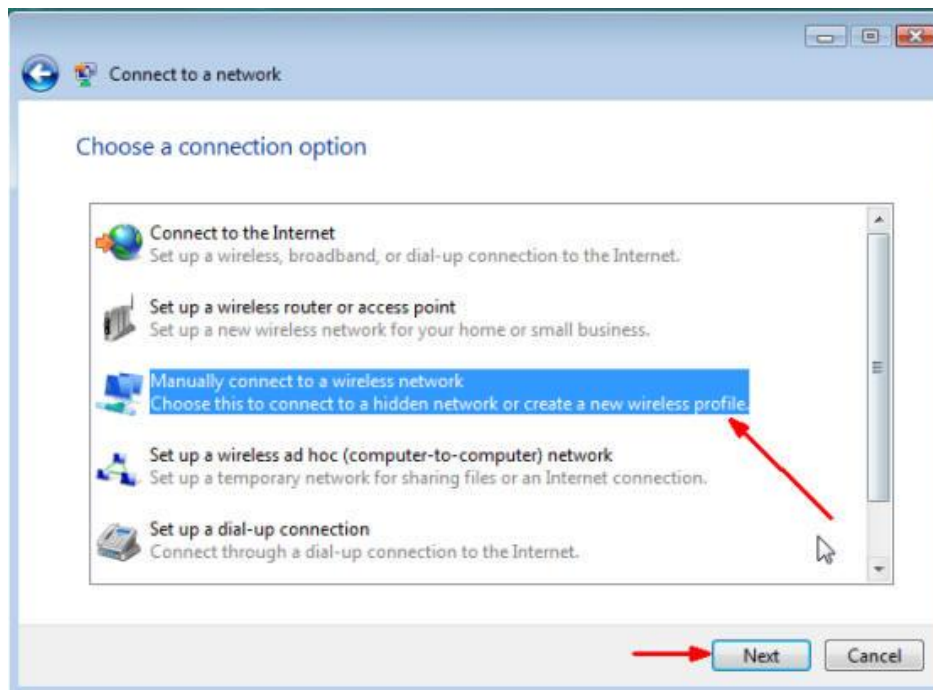
2. Click on the **Open Network and Sharing Center**



3. Click on **Set up a connection or network**



4. Select **Manually connect to a wireless network**. Click on **Next**.



5. Type in **students** for the **Network name**. Select **WPA2-Enterprise** using the drop down menu for the **Security type**. Select **AES** using the drop down menu for **Encryption type**. Click on **Next**.

Manually connect to a wireless network

Enter information for the wireless network you want to add

Network name:

Security type:

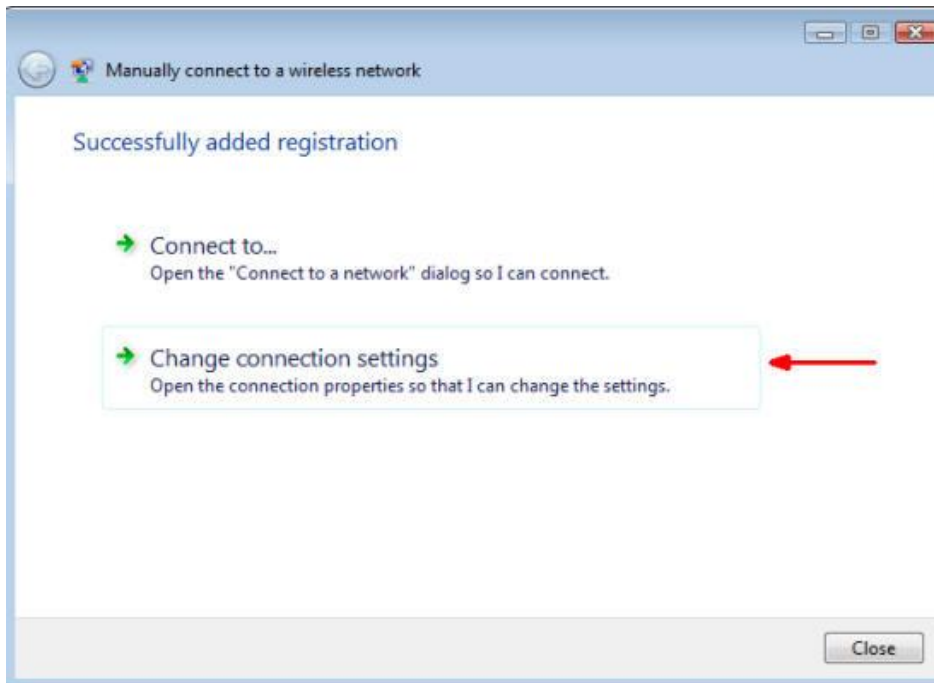
Encryption type:

Security Key/Passphrase: Display characters

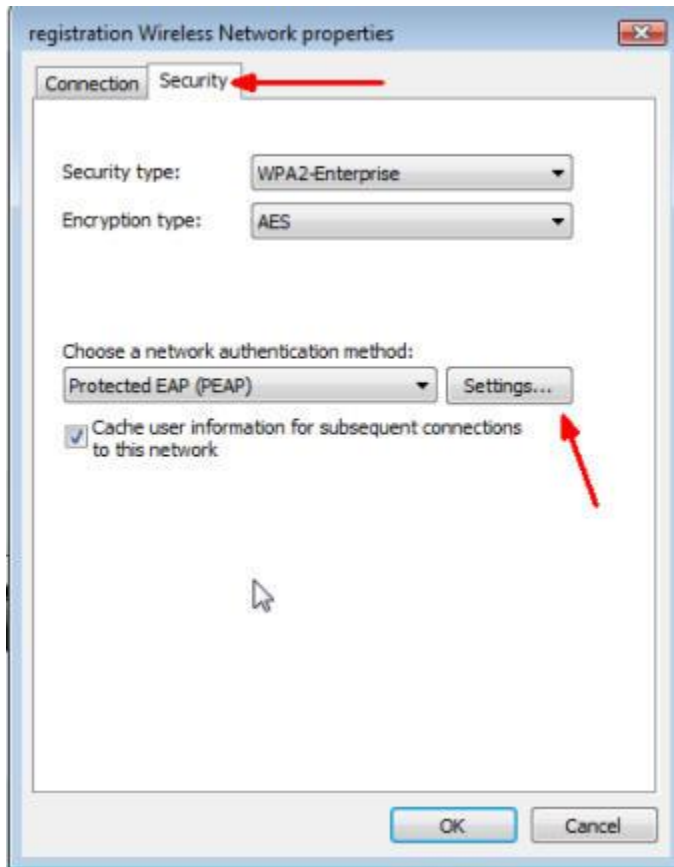
Start this connection automatically

Connect even if the network is not broadcasting
Warning: If you select this option, your computer's privacy might be at risk.

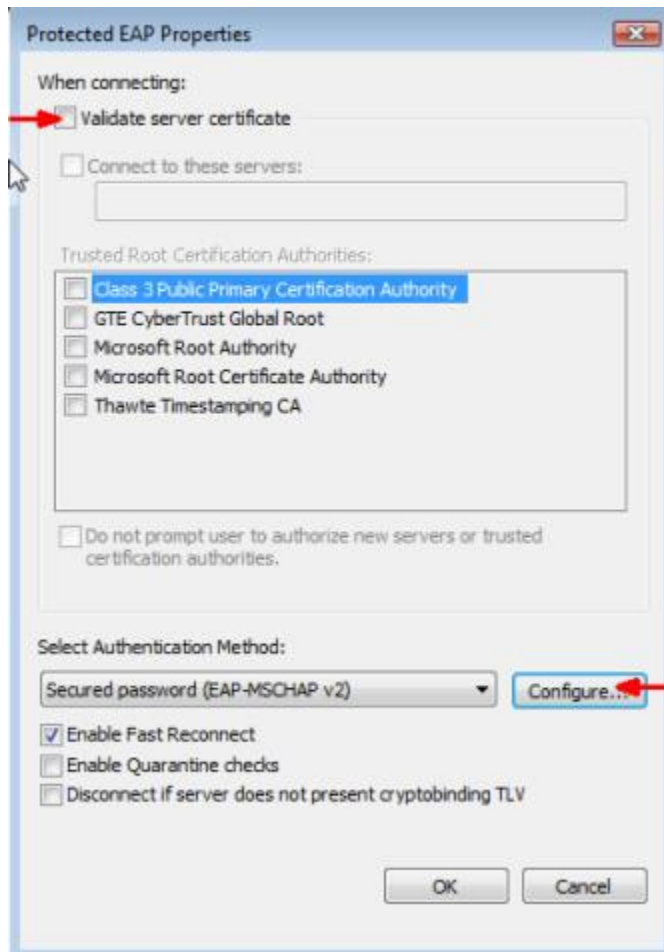
6. Click on **Change connection settings**.



7. Click on the **Security** tab and click on the **Settings** button next to **Protected EAP (PEAP)**.



8. Uncheck the box labeled **Validate server certificate**. Click on **Configure** next to **Secured password (EAP-MSCHAP v2)**.



9. Uncheck the box **Automatically use my Windows logon name and password (and domain if any)**. Then click **OK**.

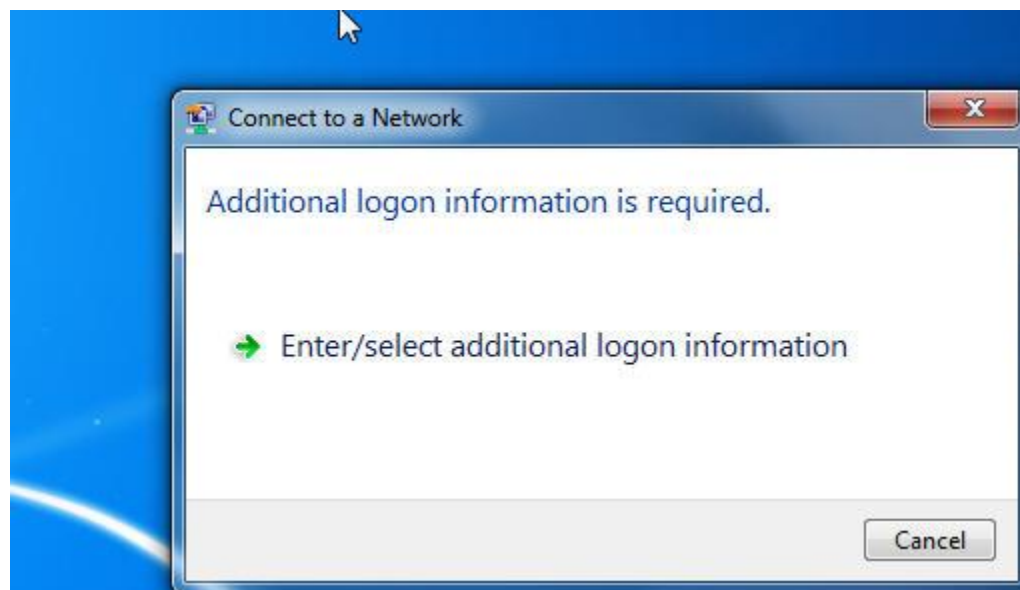


10. Click **OK** in the **Protected EAP Properties** window.

11. Click **OK** in the Wireless network properties window.

12. Click **Close** in the **Manually connect to a wireless network** window.

13. Now, when your computer is in range of the Blue Ridge CTC network, you will see the balloon shown below pop up from the system tray. Click in the balloon.



14. When the **Network Authentication** box appears, **Enter** your Blue Ridge **User name and password**. Click **OK**.



15. Place the cursor over the **Network Connection** icon in the system tray (bottom right corner). A balloon will pop up verifying you have connected to the student wireless network.

